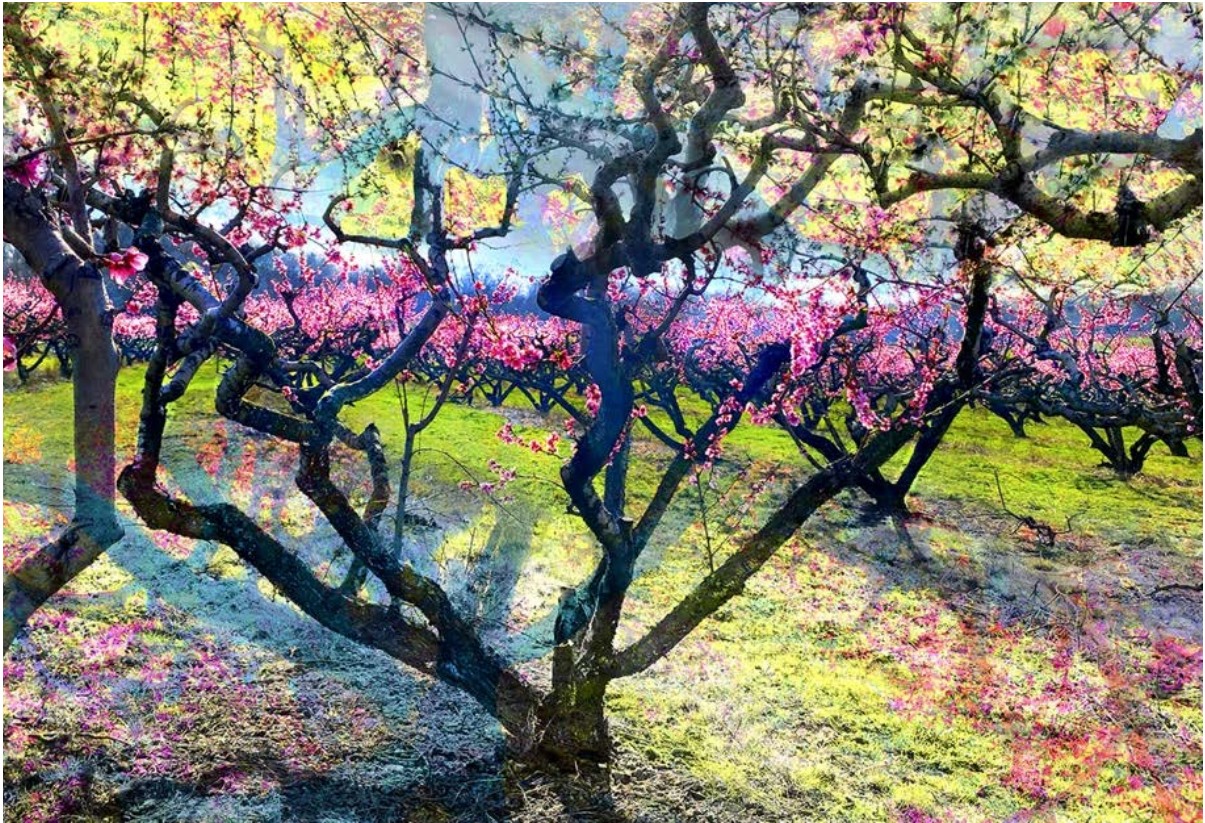


Venture Gallery

April 1st-May 30th, 2025

Fine Art Photography by Brenda Welty



Fractured Metropolis-Time Capsule Surreal Urban Transformation Photomontage

"Fractured Metropolis-Time Capsule" blends past and present urban landscapes, creating a layered narrative of transformation and time. The juxtaposition of modern glass buildings, older suburban homes, and a glowing sunset sky evokes a surreal transition between eras. The tree with budding leaves acts as a focal point, symbolizing renewal and nature's quiet persistence amid urbanization. The floating birds and reflected architecture add a dreamlike quality, enhancing the feeling of a city caught between memory and progress.

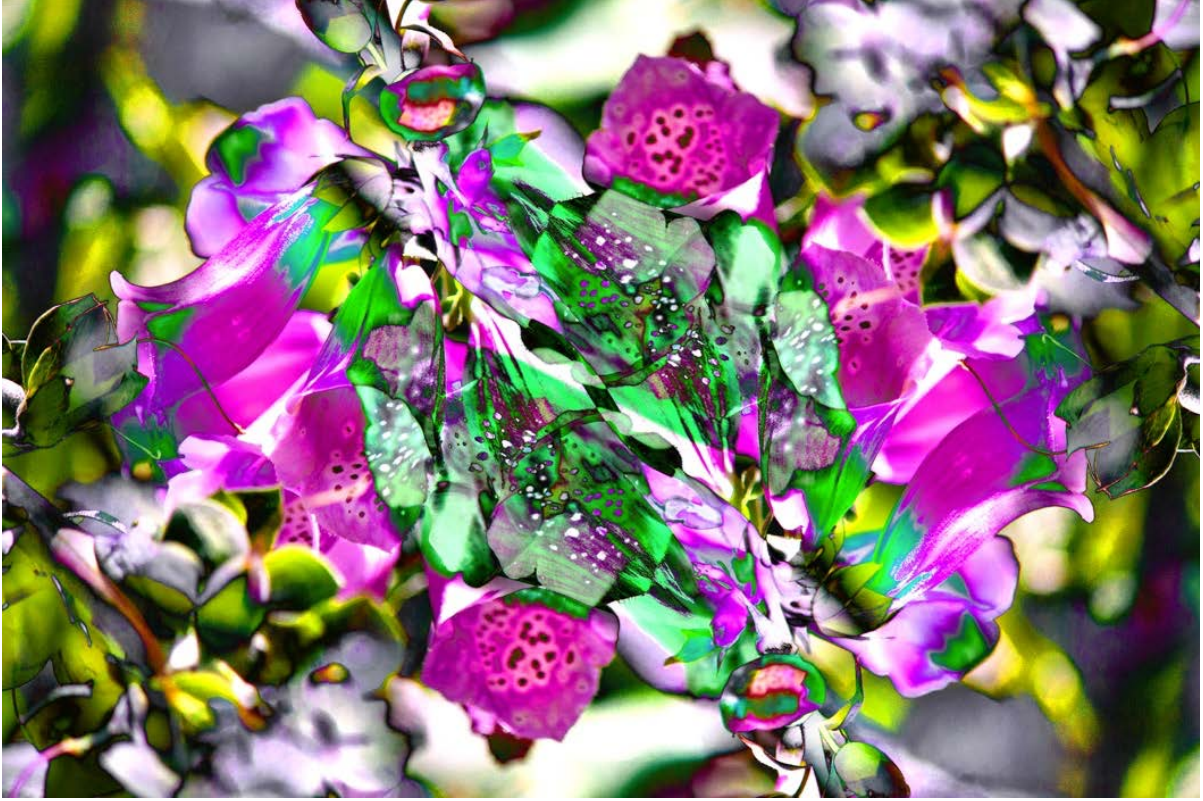
A patron once told me that this image portrayed the transition from small town life to big city. The explosion of light and color with the nod to rebirth with the early spring leaves, create a hopeful symbiotic relationship.



Fractured Metropolis-Time Capsule

Fractured Eden Abstract Surrealism with Digital Manipulation

"Fractured Eden" blends elements of abstract surrealism with digital manipulation techniques, creating a dreamlike, layered floral composition. The image showcases vivid colors, high contrast, and distorted organic forms, giving it an ethereal and futuristic quality. The mirrored and fragmented floral structures suggest a fusion of natural beauty with digital transformation.



Fractured Eden

Spring Blooms

Soft Floral Abstraction Impressionism

"Spring Blooms" Captures the delicate beauty of a blooming flower, layered with soft, glowing textures and light. The warm orange and golden tones evoke the warmth of a sunrise or sunset, while the blurred background and abstract overlays give it a dreamy, ephemeral quality. The piece emphasizes the fragility and fleeting nature of spring blossoms.

When I create a piece of art that is grounded in realism, what happens is I get caught up in the blending of color and light and feel the glow all around me. I love the blooms and buds, the bokeh lighting and shadows.



Spring Blooms

Harvest in Blue

Botanical Composition of Abstract Realism

"Harvest in Blue" captures an otherworldly depiction of apples scattered amidst abstract textures and patterns. The vibrant reds, yellows, and greens of the fruit contrast with deep blues and organic forms, creating a surreal and dreamlike atmosphere. The juxtaposition of natural details and painterly abstractions highlights a unique, almost ethereal interpretation of a harvest scene.

For me personally the image embraces a blend of realism and imagination. Blended and layered with leaves and plants the image gives me an imaginary feel. This like much of my work, pulls from my past from a childhood of apple picking, eating crap apples straight from the tree on early fall days. Ignoring the warnings of belly aches and worms. Joyful silly things I did with my sisters and cousins.
Enjoy.



Harvest in Blue

L'Aria

Abstract Expressionism - Lyrical Abstraction

"L'Aria" reflects Abstract Expressionism with a focus on Lyrical Abstraction. It emphasizes spontaneity, dynamic brushwork, and vivid contrast, using rich reds and blacks to evoke emotion rather than represent physical forms. The textured layering and expressive movements create a sense of depth and energy.

It reminds me of Koi swimming frantically while a solo is performed at an opera. It takes a minute sometimes to pull your thoughts together relating to an art piece. It's never fully defined because I like to leave things to interpretation.

The image was created with roses. In the process of creating, I played with monochrome tones, lithograph images and bold color blended and mixed to the final edit. After that is the choice of paper finish and scale.



L'Aria

Time and Nature

Surreal Botanical Landscape Collage

"Time and Nature" belongs to Surreal Botanical Landscape Collage, where natural elements like trees, flowers, and sky are fragmented into an abstract, layered dreamscape. The vibrant blending of warm and cool tones creates a dynamic yet harmonious energy, evoking both movement and reflection.

This is one of those images that evolved over many editing sessions. I love the repetition, the lines that don't line up, the color palette. I would put this into the category of abstract expressionism.



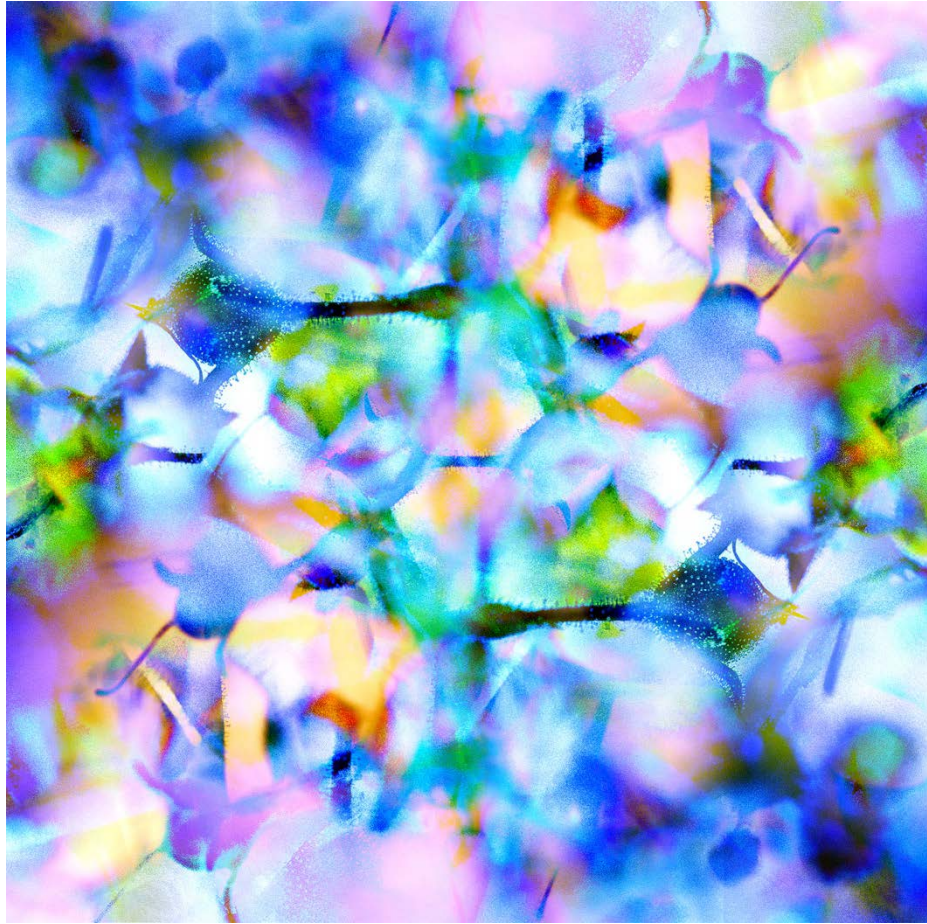
Time and Nature

Reverie

Ethereal Floral Symmetry

"Reverie" fits within Ethereal Floral Symmetry, a style where soft, blended florals merge into a harmonious, mirrored abstraction. The composition radiates a dreamlike glow with pastel hues, evoking fluidity and movement, while the symmetry adds an almost meditative quality.

This piece is a fun exercise in repeating patterns of color and subject and light into a kaleidoscope of energy. It started as the seed pods of mullein, a native plant to the area, photographed in very depth of field against a gorgeous blue sky to create depth and texture. I like to sit in a field of shallow wildflowers for hours exploring the shapes and reflective light and patterns. The process of creating the base image is a joy unto itself and then choosing the perfect paper to bring out the soft textures of the glowing subject completes it. Each step is really exciting.



Reverie

Memories in Bloom Ethereal Botanical Abstraction

"Memories in Bloom" fits within Ethereal Botanical Abstraction, a style where soft, glowing floral elements merge into an atmospheric, dreamlike composition. The blend of cool blues, pastel highlights, and soft yellow bursts creates a calm, floating energy reminiscent of misty morning light or a memory in bloom.

One of the things I love to do is to dive into thoughts and ideas that come to me during the editing process. This image is made up of wild mullein plants, beautiful blue sky and layering. The photos were taken on a sweltering hot summer day in July.

The finished piece is then enhanced by the choice of archival photo paper used to print it.



Memories in Bloom

Neon Dreamscape Psychedelic Abstract Energy

"Neon Dreamscape" is a celebration of vibrant, swirling color and motion. The energetic composition and bold contrasts between pinks, purples, greens, and yellows create a dynamic visual rhythm. The fluid forms and vivid color palette evoke a sense of movement and creative chaos, reminiscent of psychedelic aesthetics. This image is a graphic image using lines and color to create.

I lean to a very heavy color palette. It's a style I like very similar to Pop Art images of the 70s. It has a lyrical feel in blocks like the Brady Bunch.



Neon Dreamscape

Where Trees Dream

Impressionistic Orchard Landscape

"Where Trees Dream" captures the serenity of a blossoming orchard, blending soft pastel tones with textured layers to evoke a dreamlike atmosphere. The gnarled trees create dynamic shapes, while the vibrant pinks and greens celebrate the renewal of spring. The composition feels immersive and meditative, drawing the viewer into a tranquil natural scene.

There's a peach orchard not far from my home where I go to feel peace and take photos of trees and blooms. The feeling you get alone in the orchard is meditative with the rows of colored peach blossoms, the twisted gnarling trees with wide outstretch branches. It feels like a sacred place.

This image is a projection of those times. Memories of pink rows lined up perfectly, the contrasts of delicate flowers and hard twisting branches and the heady fragrance of peach warmed by the sun is foremost in my mind.



Where Trees Dream

Rose in Motion

Psychedelic Surrealism

"Rose in Motion" combines natural elements like trees with vivid, swirling, and kaleidoscopic patterns in a surreal, dreamlike composition. The juxtaposition of natural realism and abstract, colorful spirals creates a visually arresting and immersive effect characteristic of psychedelic surrealism.

One of my favorite styles is abstract impressionism. This photo can also be considered pop art due to the graphic style and bright pops of color.

It is a layered collage style piece but done digitally rather than cut and paste.



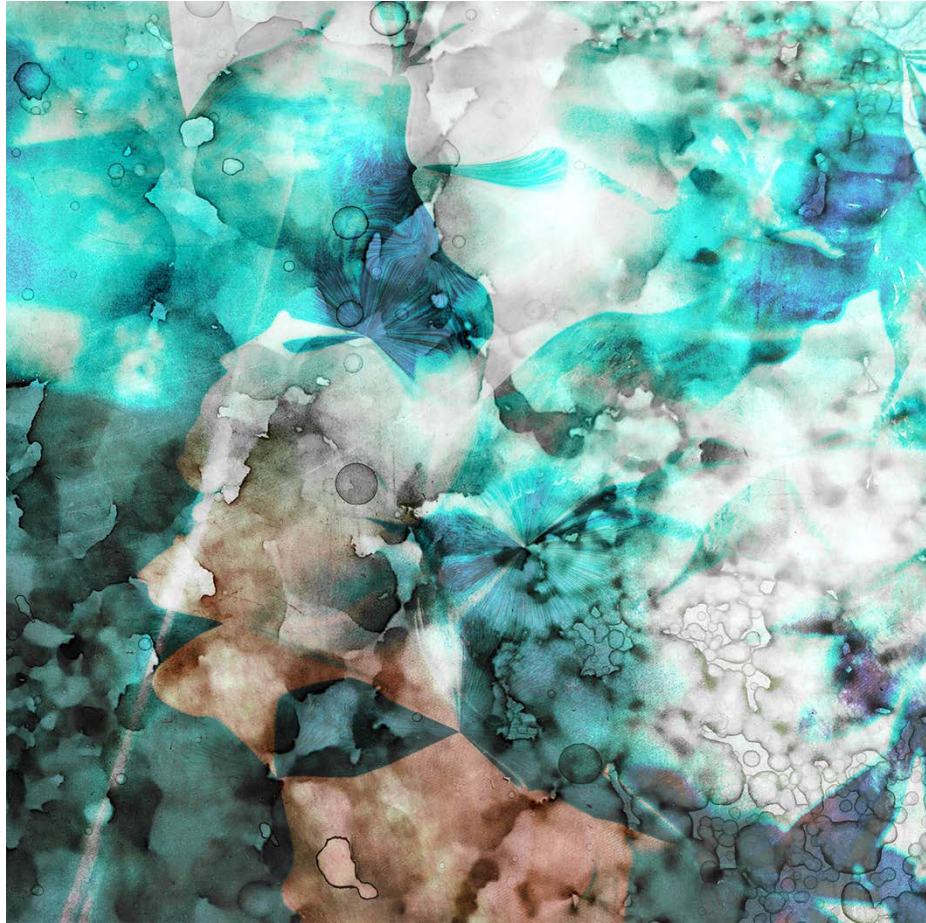
Rose in Motion

Geology aka Whispers of the Earth Organic Abstract Dreamscape

"Geology aka Whispers of the Earth" features a soft, organic composition that blends natural tones of green, brown, and hints of blue with flowing textures and subtle patterns. The abstract shapes, reminiscent of leaves, water, or feathers, create a tranquil yet mysterious atmosphere, evoking thoughts of nature's hidden processes and unseen worlds.

This started as a photo I took of a countertop on a laboratory bench. Stripping the color to monochrome and adding a counterpart shade of burnt umber gave me the primary 3 colors to work with. The rest was playing with lines, color, texture, shadow and light.

It's a nice way to create abstract art.



Geology aka Whispers of the Earth

Transcendent Flora

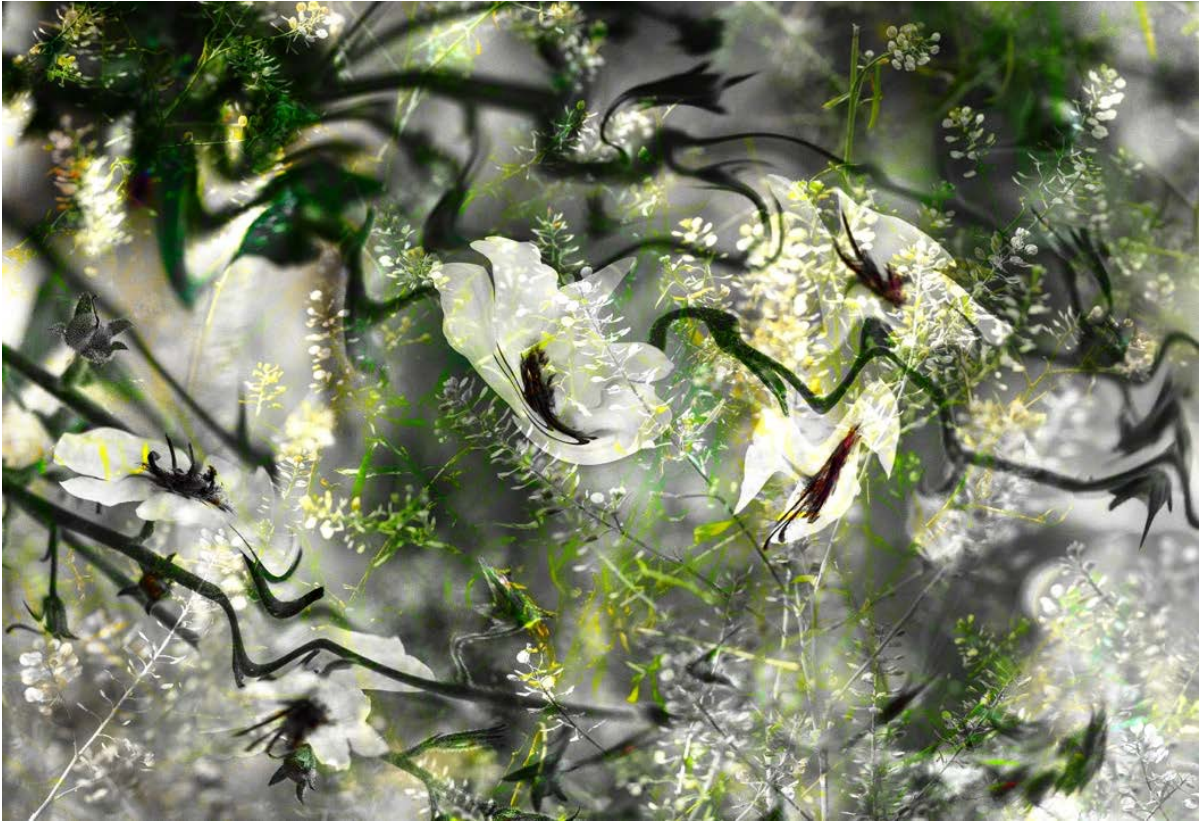
Ethereal Floral Abstraction

"Transcendent Flora" falls under Ethereal Floral Abstraction, where delicate floral elements are layered with soft-focus, dreamlike distortions. The composition creates an otherworldly atmosphere, evoking movement, light, and a sense of natural mysticism.

This cool image evolved on its own. Starting from a field of mullein leaves and plants and twisting and turning with layers of tiny, dried field weeds and green shrubs from the forest.

Colors and images and lines merge and shift until they reach their current state. Then another snapshot is formed. A finished piece full of life and energy and very much open to interpretation.

Peace



Transcendent Flora

Orange Fusion Botanical Abstract Expressionism

"Orange Fusion" belongs to Botanical Abstract Expressionism, where floral elements dissolve into warm, painterly textures, creating a dreamlike fusion of organic forms and expressive abstraction. The rich interplay of peachy oranges, deep greens, and layered botanical textures gives it a surreal yet inviting quality.

A lot of my art is environmental, and nature based. Flowers grass, trees, weeds, everything I'm attracted like a bee to the details- the petals, the heart of the flower that dries to seeds, the petals and buds at all stages.

Fields of flowers are a fertile place to photograph. The plants are often at many stages-fresh young buds just starting to show color, full bold blooms, and the gradual fade. It represents all stages of life. Such an interesting sight either at the shriveled and crispy stage to gorgeous flower.

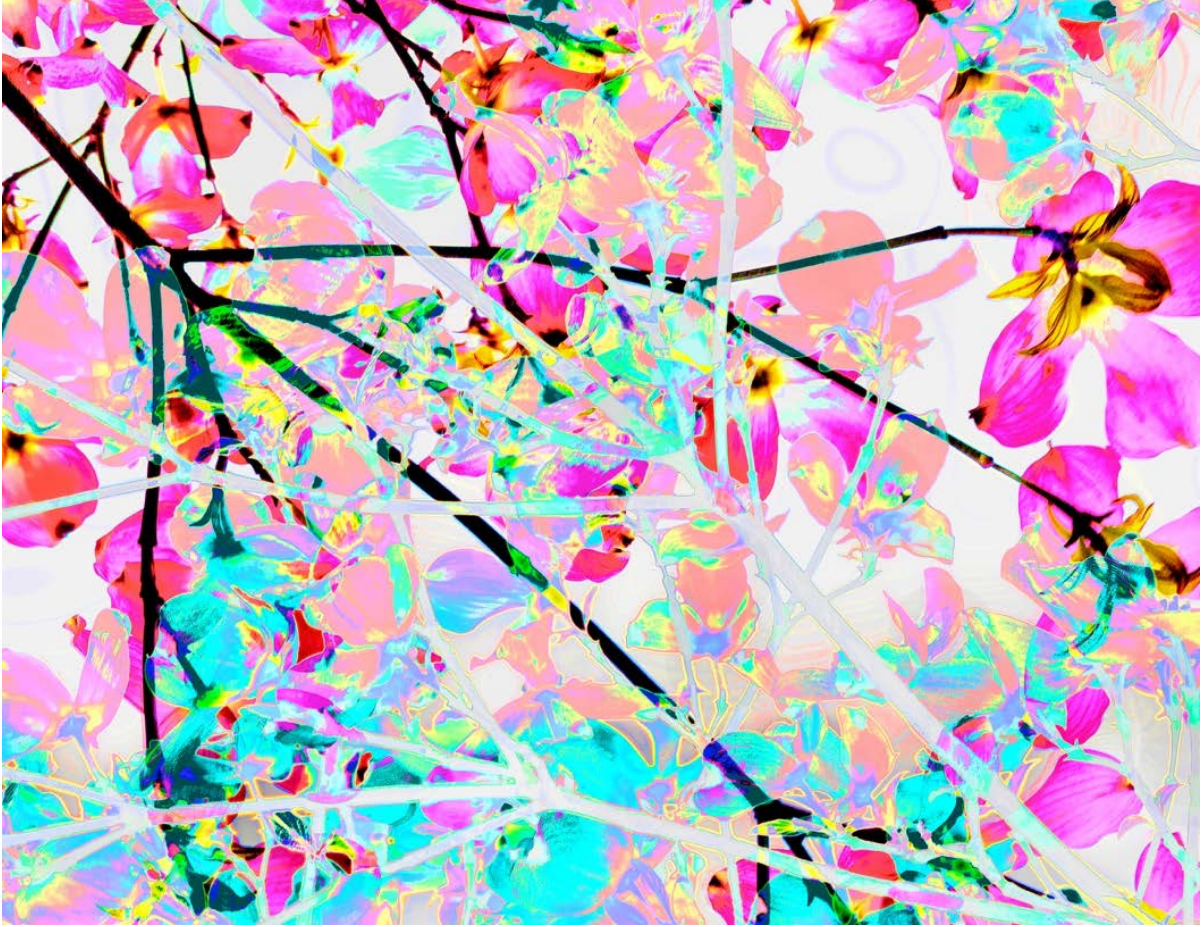


Orange Fusion

Glass Branches Psychedelic Botanical Abstraction

"Glass Branches" falls under Psychedelic Botanical Abstraction, where vibrant, unnatural color shifts transform organic forms into electric, dreamlike compositions. The bright neon hues, stark contrast, and outlined floral branches create a hallucinatory, almost otherworldly effect, making it appear as if nature has been reinterpreted through a prism of energy and light.

I call this piece glass branches because I love the idea of a place where trees can be made of crystal with gorgeous bright colored flowers and leaves. A place more beautiful than OZ.



Glass Branches

Blue Branch Psychedelic Abstract Neurodigital - Abstract Art Style

"Blue Branch" blends organic, neuron-like fractal lines with hyper-saturated, luminous colors and layered translucency, falling under the Psychedelic Abstract style. It incorporates neuro-inspired patterns rendered digitally, evoking the electric and introspective aesthetic of altered consciousness or digital dreams. The fusion of fractal webbing and glowing overlays creates a mesmerizing, immersive experience often linked with neural networks, brain activity visuals, and psychedelic states.



Blue Branch

Electric Garden Neo-Expressionist Botanical Abstraction

"Electric Garden" falls under Neo-Expressionist Botanical Abstraction, characterized by bold, chaotic compositions, expressive strokes, and high-energy color layering. It merges organic plant elements with intense digital manipulation, evoking a sense of wild movement and emotional vibrancy.



Electric Garden

Soft Peaches

Dreamy Impressionist Photo-Fusion - Surreal Abstract Style

"Soft Peaches" radiates with soft, overlapping pastel hues and semi-transparent tree silhouettes, giving it an ethereal, dreamlike atmosphere. It blends photographic realism with impressionist softness, which reflects a Surreal Impressionist approach - a poetic fusion of nature, color, and light. The layering and color grading suggest emotive storytelling through altered perception.

This photo makes me think of summer with all the brilliant colors. I can smell the scent of the fresh peaches and when I squint my eyes in the bright sun, I can see the glowing colors blurring together.

This was done by using several photos and layering them.



Soft Peaches

Crystal Cave

Neo-Expressionist Crystal Abstraction

"Crystal Cave" composition embraces the Neo-Expressionist tradition with aggressive, gestural strokes and rich, textured surfaces. The chaotic interweaving of vibrant reds, yellows, and blues - overlaid with warped, glass-like reflections - evokes a crystal cave effect, hence reinforcing the sensory overload typical in crystalline abstraction. It blurs the boundary between digital manipulation and painterly texture.

This abstract photo reminds me of a crystal cave. It is a blend of several colorful photos one of them being a corn stalk. I love how the secrets remain enclosed in the layers and altogether they are a beautiful rainbow.

Enjoy



Crystal Cave

Artist Statement

Photography has been a constant thread in my life since I was 16, evolving alongside my personal path. Over the years, I've explored countless processes, styles, and formats—always driven by a sense of curiosity and discovery. My current work centers on exploration and experimentation, both in capturing and developing images, whether through film or digital techniques.

I'm drawn to scenes with compelling lines, rich color, texture, and light—whether created by nature or shaped by human hands. Gathering these moments and weaving them together gives me a deep sense of purpose. Photography, for me, is a way to connect with the world and evoke emotion, inviting viewers to pause and feel.

In this vast, unpredictable universe, photography is where I find presence, meaning, and wonder.

© 2025 Fine Art Photography by Brenda Welty.
All rights reserved.